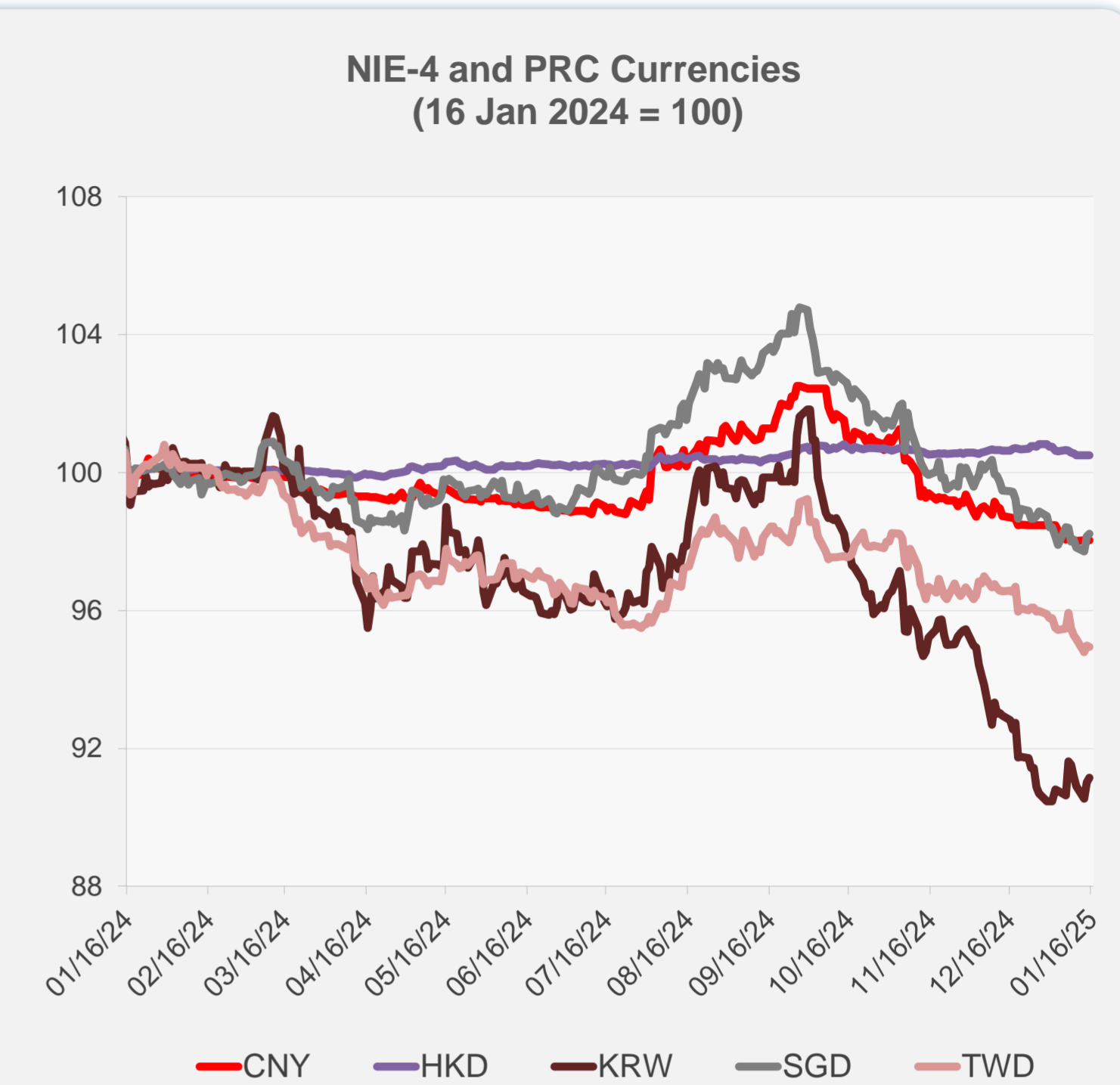
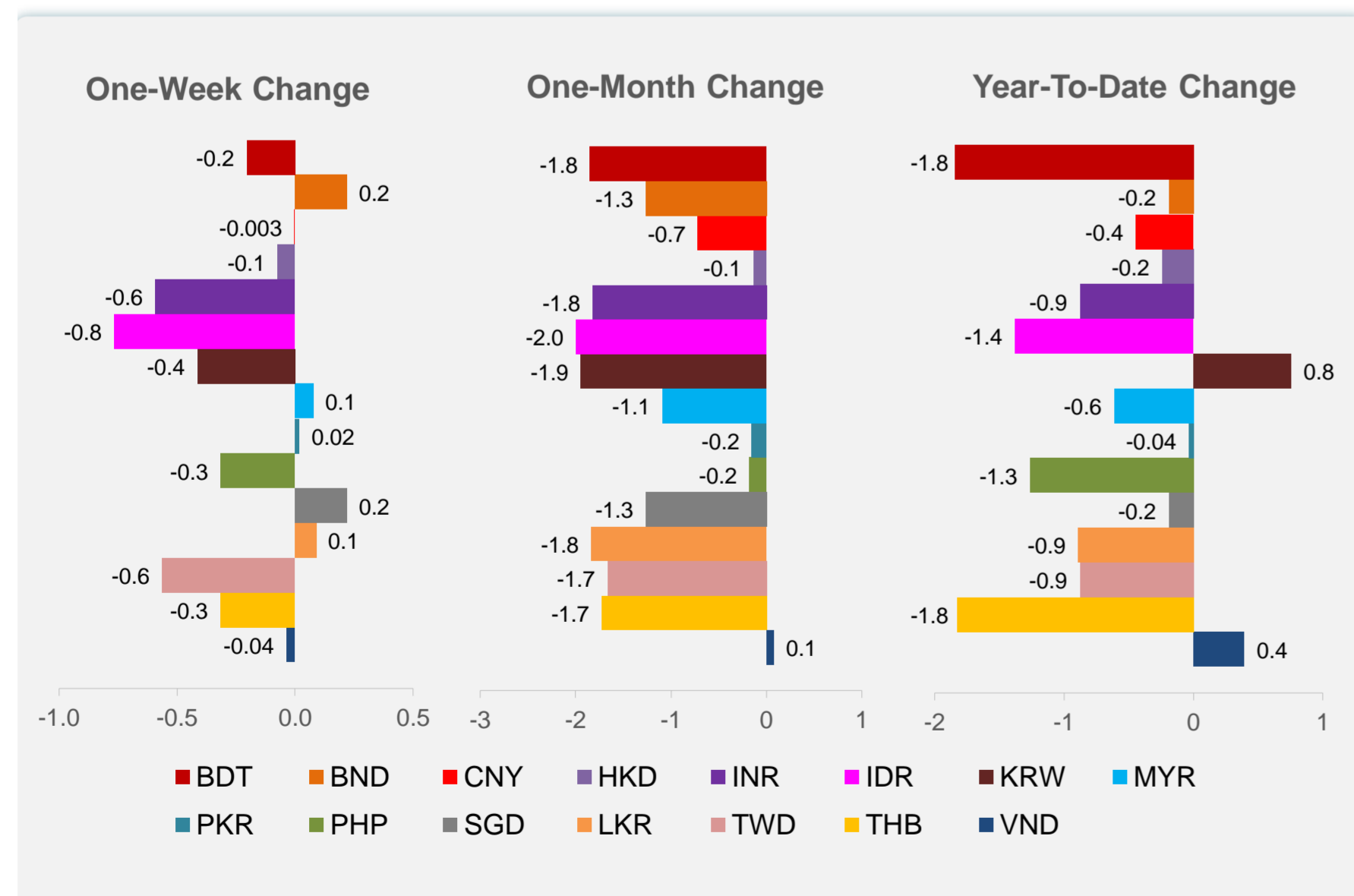
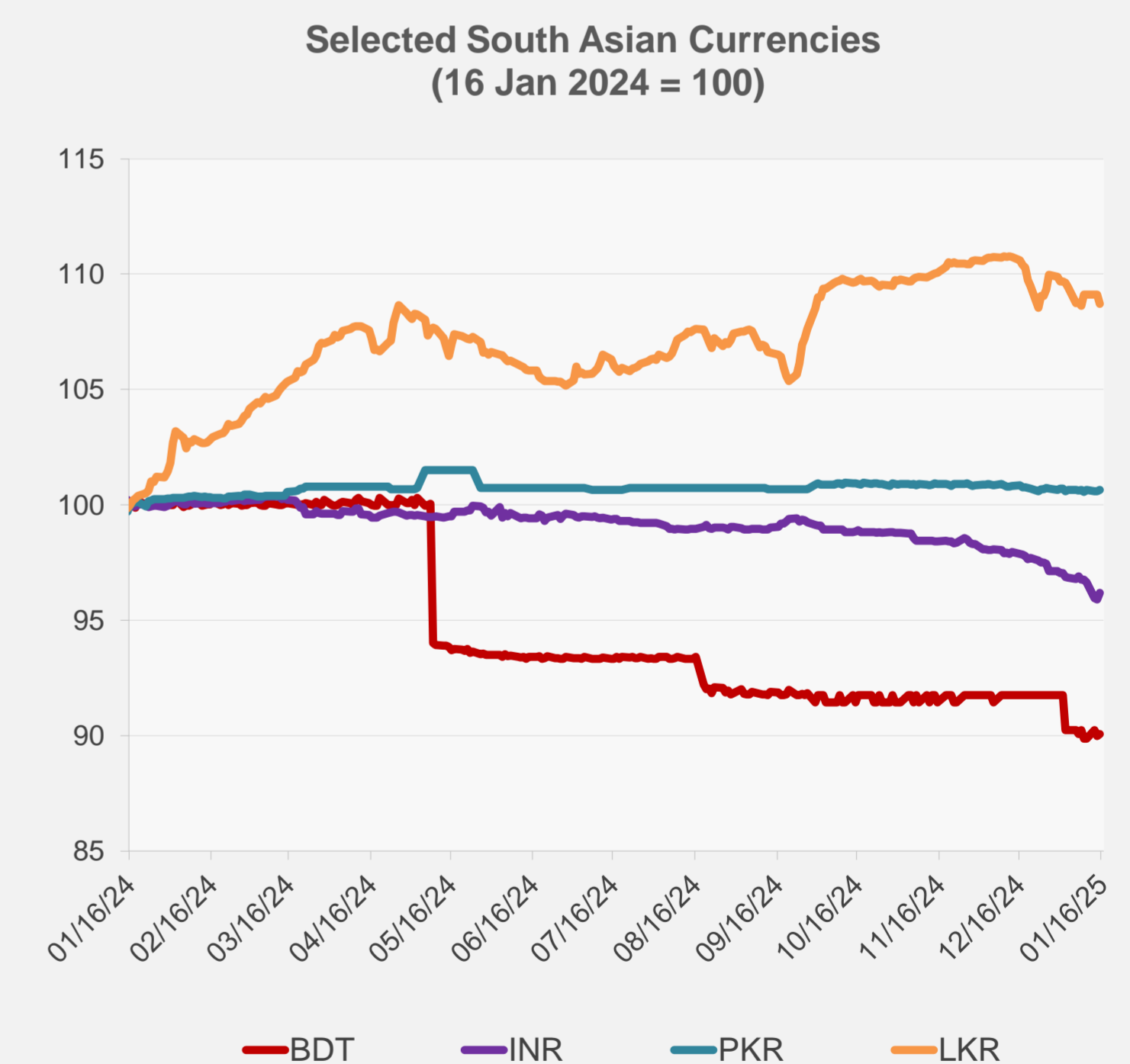
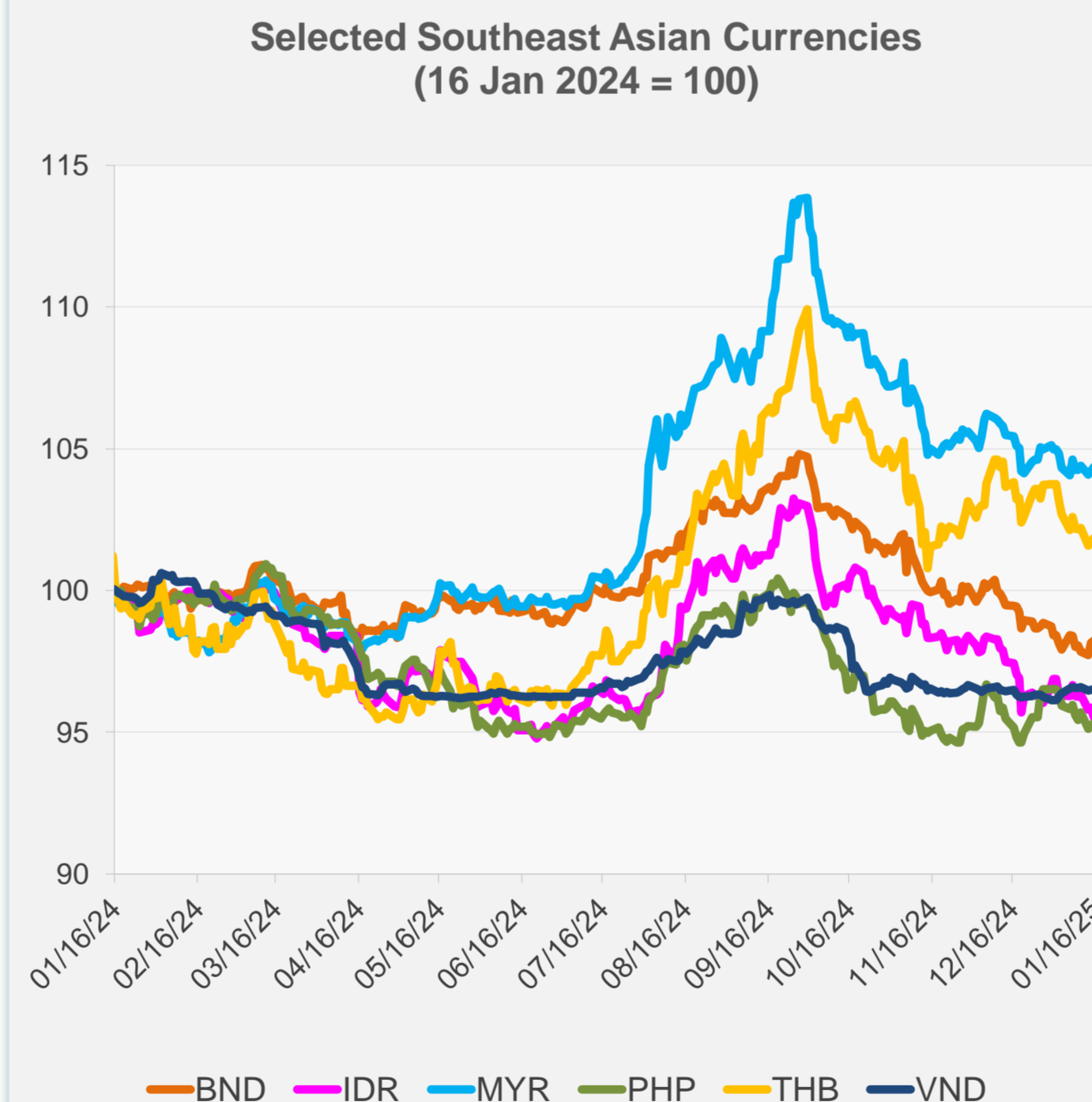


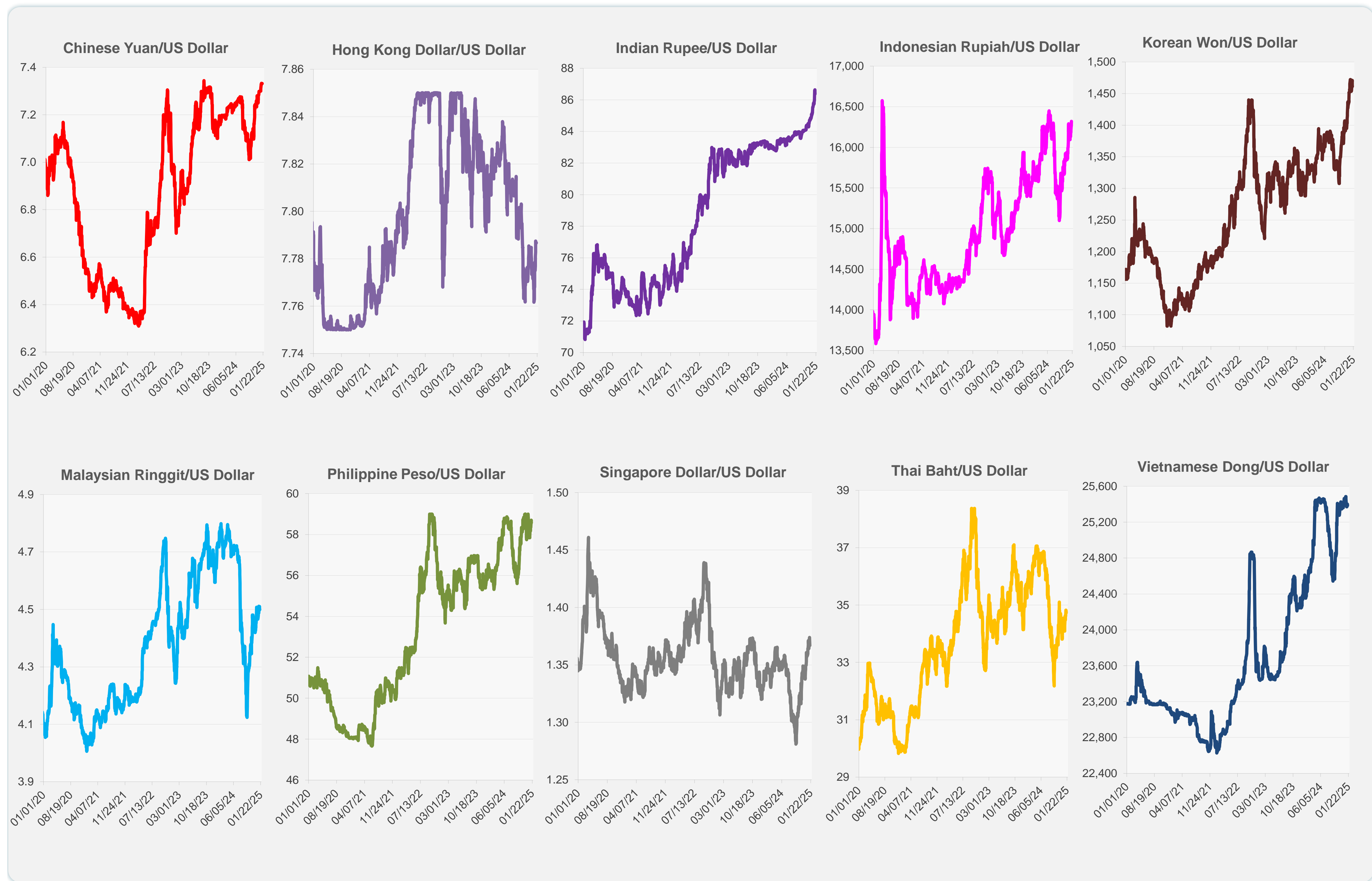
	Latest Closing	% change from Previous Day	% change from 01-Jan-25
Euro	0.97	0.10	-0.48
Japanese yen (JPY)	156.32	1.04	0.54
Bangladeshi taka (BDT)	121.75	0.10	-1.85
Brunei dollar (BND)	1.37	0.07	-0.19
Chinese yuan (CNY)	7.33	-0.02	-0.44
Hong Kong dollar (HKD)	7.79	0.00	-0.24
Indian rupee (INR)	86.37	0.31	-0.88
Indonesian rupiah (IDR)	16,320.00	-0.34	-1.38
Korean won (KRW)	1,461.10	0.16	0.76
Malaysian ringgit (MYR)	4.50	0.13	-0.61
Pakistan rupee (PKR)	278.48	0.06	-0.04
Philippine peso (PHP)	58.59	0.05	-1.26
Singapore dollar (SGD)	1.37	0.07	-0.19
Sri Lanka rupee (LKR)	295.63	-0.37	-0.89
Taipei,China NT dollar (TWD)	33.08	-0.05	-0.88
Thai baht (THB)	34.73	0.12	-1.83
Vietnamese dong (VND)	25,385.00	0.02	0.39



NIE = Newly Industrialized Economies

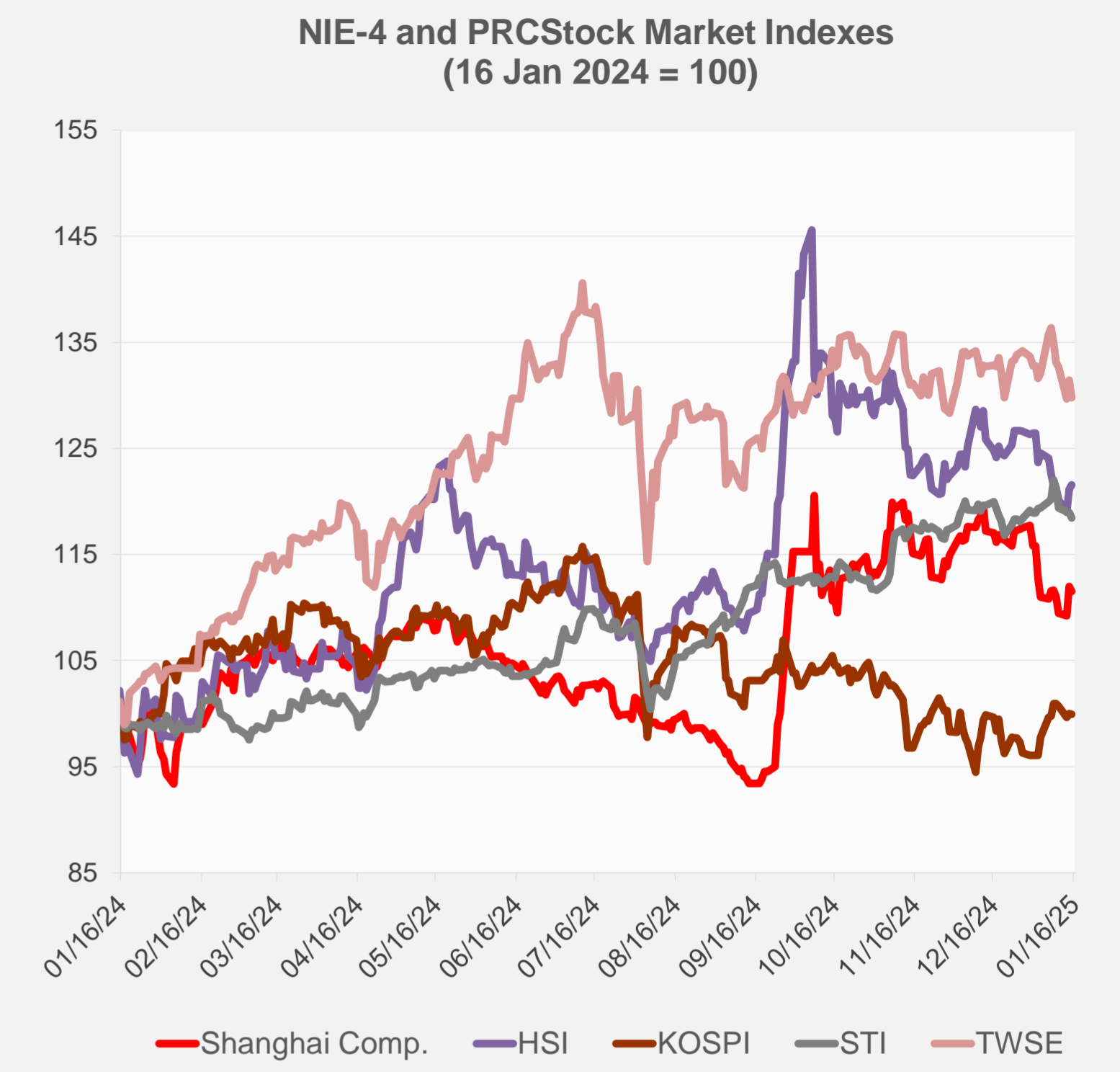
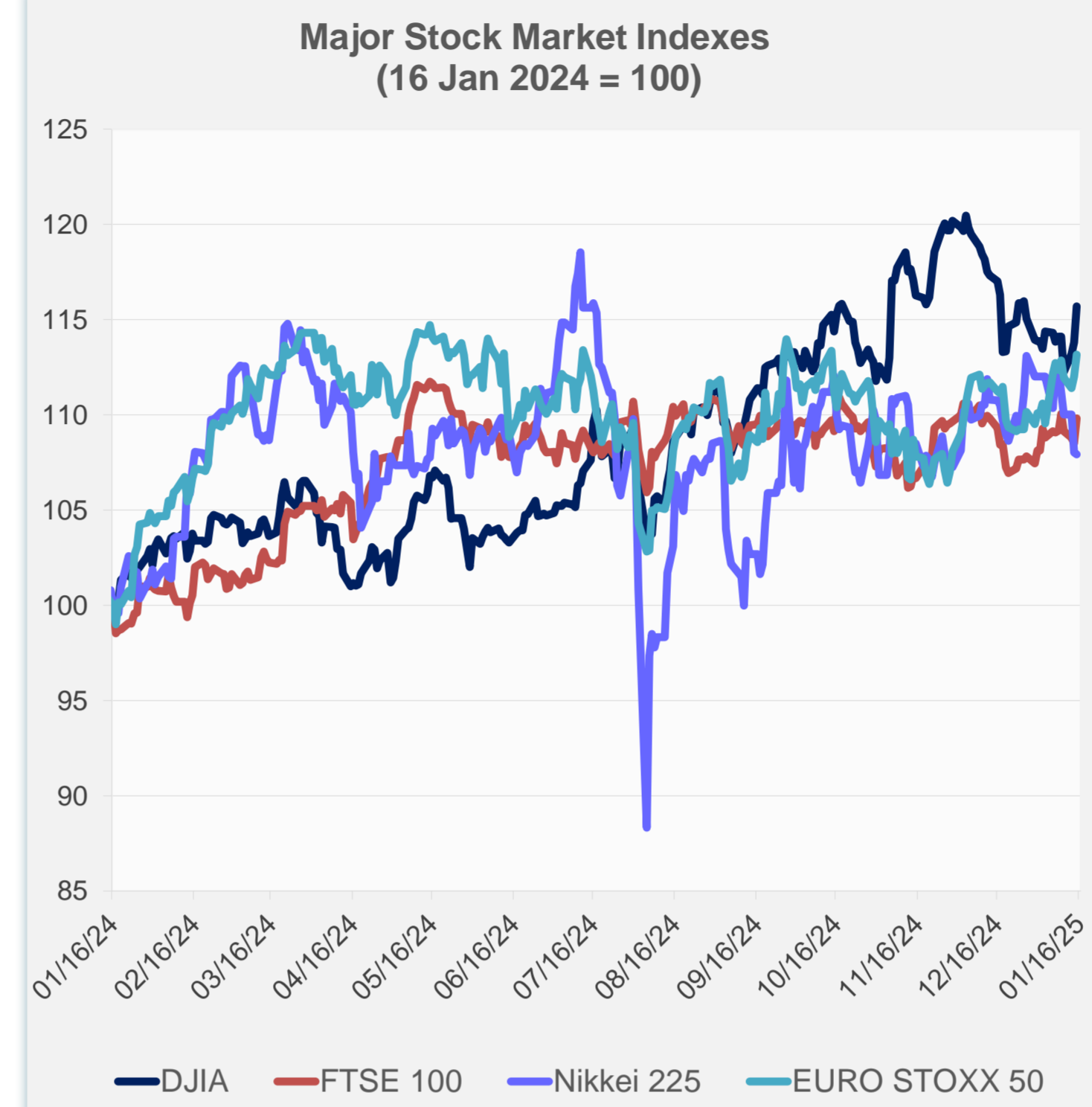


Note: Negative/Decreasing values indicate depreciation of local currency, and positive/increasing values indicate appreciation.
Source: ADB calculations using data from Haver Analytics.

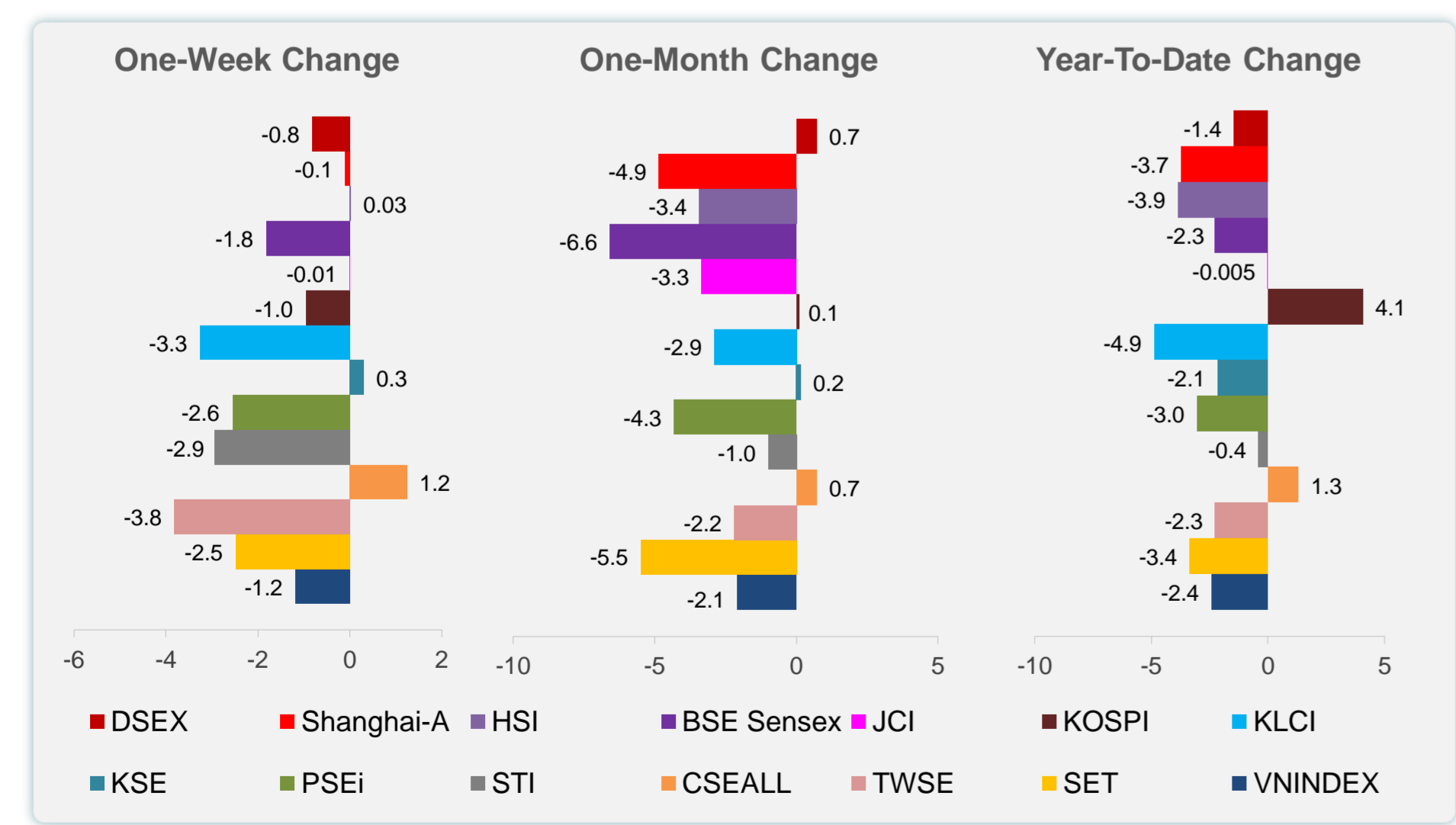
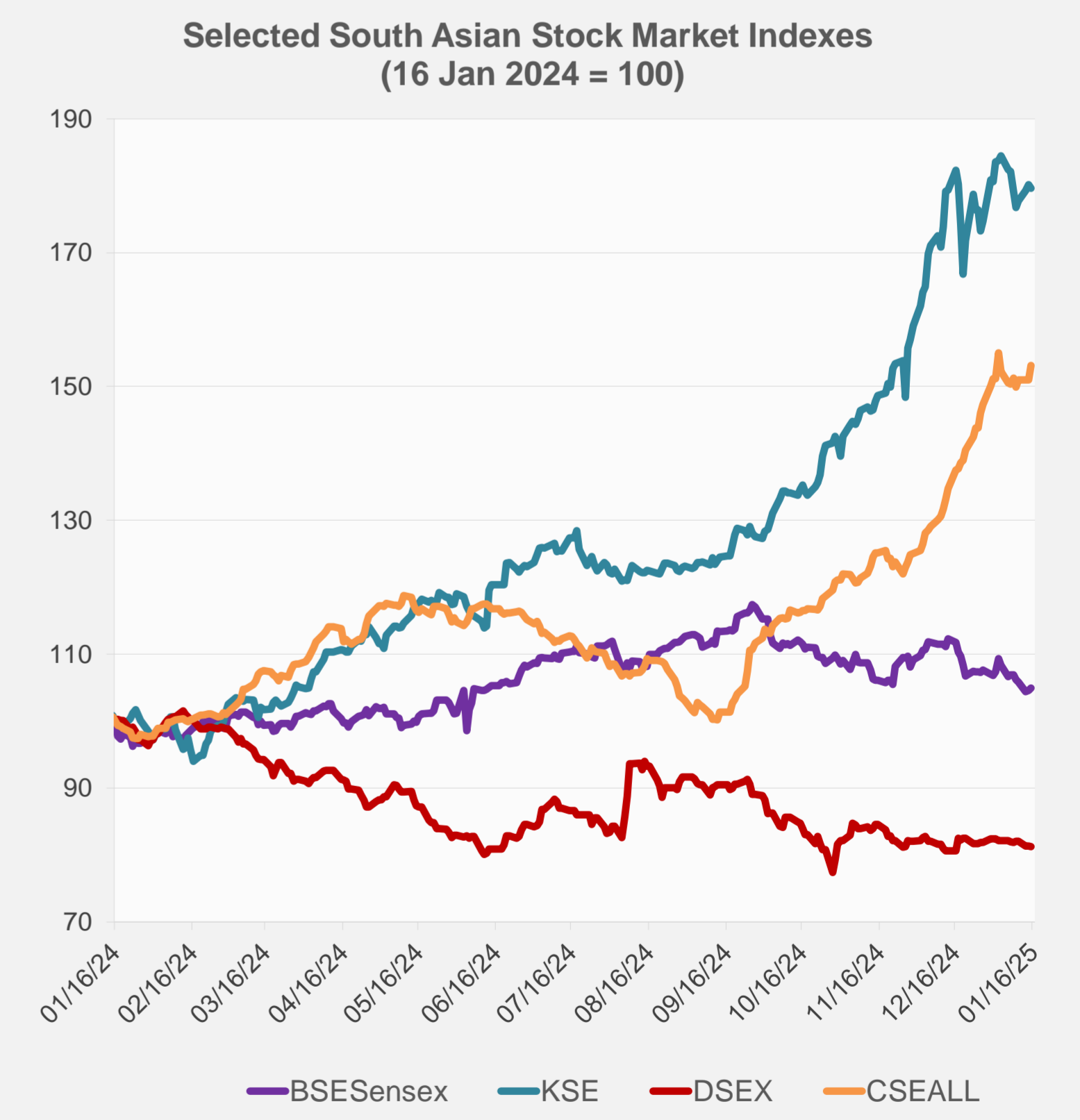
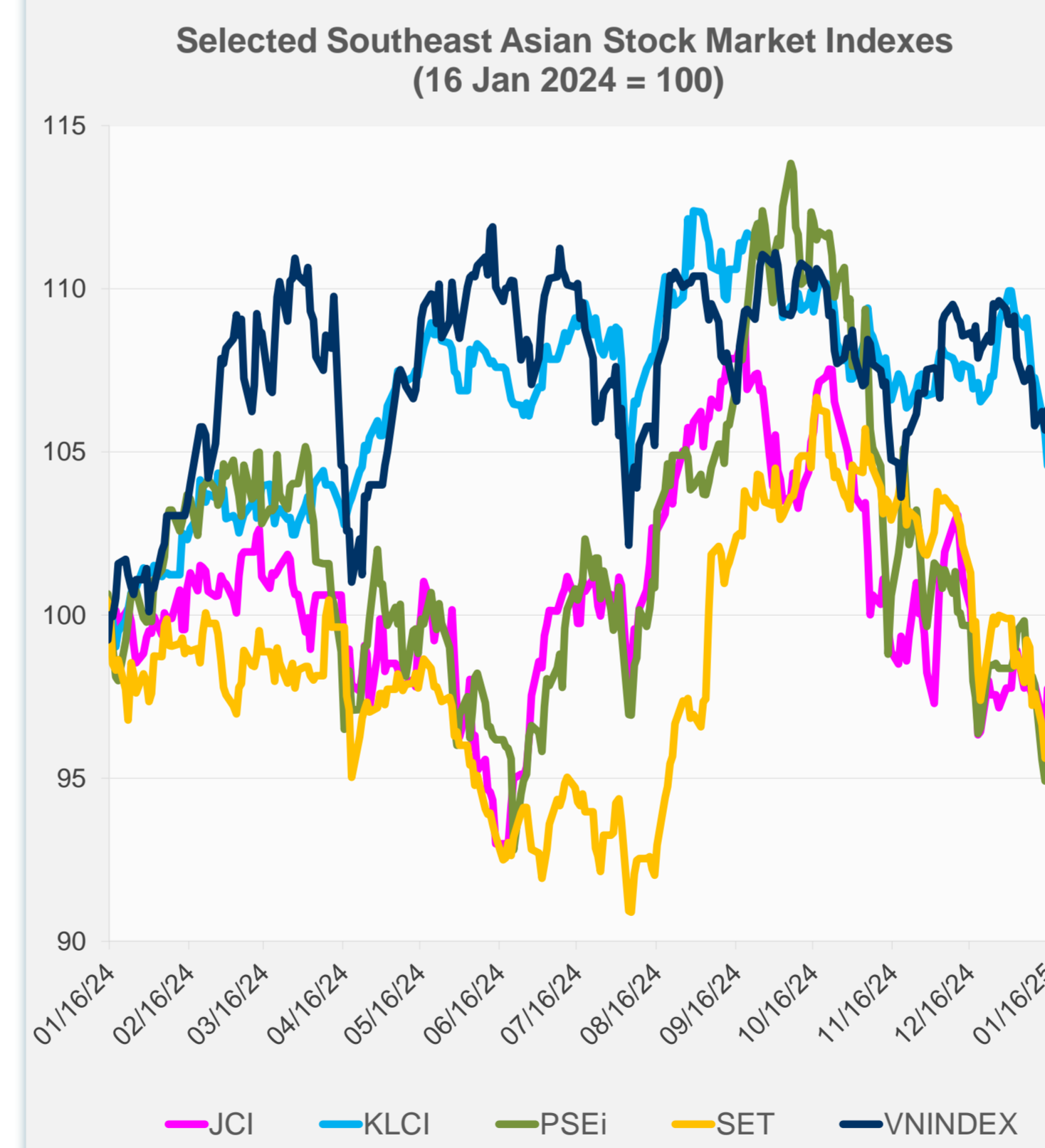


Source: Haver Analytics.

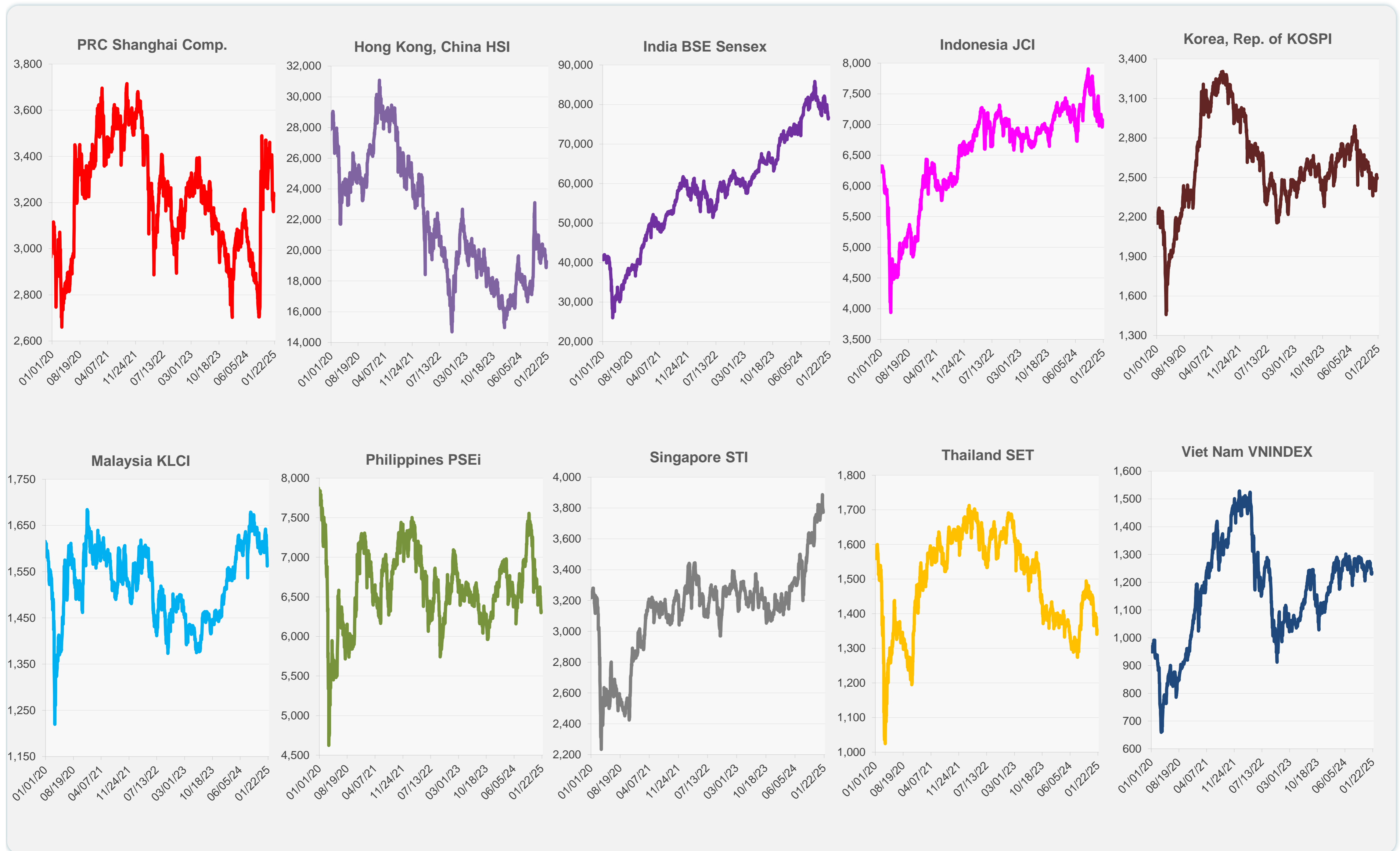
	Latest Closing	% change from Previous Day	% change from 01-Jan-25
US Dow Jones Ind Avg	43,221.55	1.65	1.59
US NASDAQ	19,511.23	2.45	1.04
US S&P 500	5,949.91	1.83	1.16
UK FTSE 100	8,301.13	1.21	1.57
EURO STOXX 50	5,032.31	1.04	2.78
Japan NIKKEI 225	38,444.58	-0.08	-3.63
Bangladesh DSEX	5,142.52	-0.16	-1.45
PRC Shanghai Comp.	3,227.12	-0.43	-3.72
Hong Kong, China HSI	19,286.07	0.34	-3.86
India BSE Sensex	76,724.08	0.29	-2.27
Indonesia JCI	7,079.56	1.77	0.00
Korea, Rep. of KOSPI	2,496.81	-0.02	4.06
Malaysia KLCI	1,562.12	-0.91	-4.88
Pakistan KSE 100	114,495.70	-0.27	-2.15
Philippines PSEi	6,330.46	0.49	-3.04
Singapore STI	3,772.58	-0.43	-0.40
Sri Lanka CSEALL	16,152.35	1.42	1.30
Taipei, China TWSE	22,514.57	-1.24	-2.26
Thailand SET	1,353.17	0.96	-3.36
Viet Nam VNINDEX	1,236.18	0.58	-2.42



NIE = Newly Industrialized Economies



Sources: ADB calculations using data from CEIC Data Company and Haver Analytics.



Sources: CEIC Data Company and Haver Analytics.

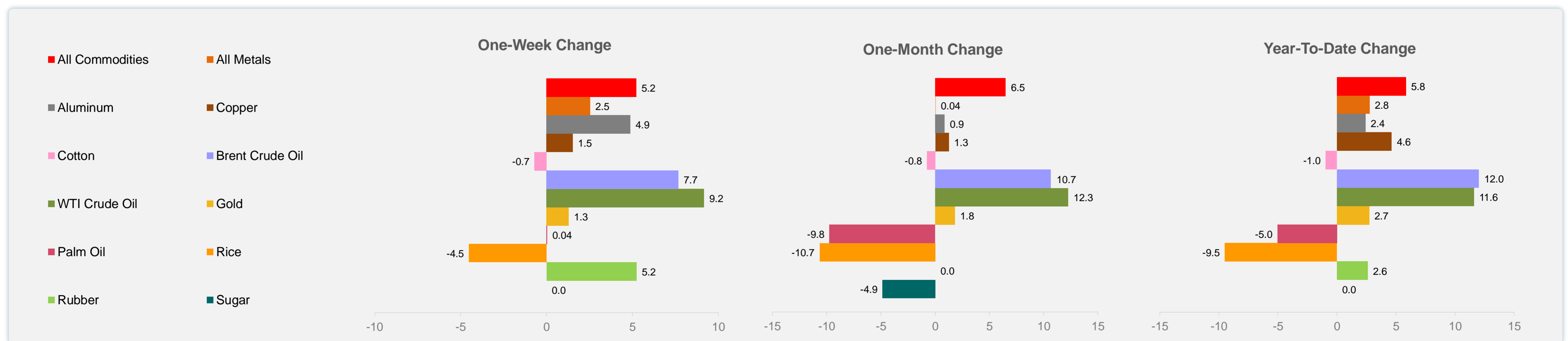
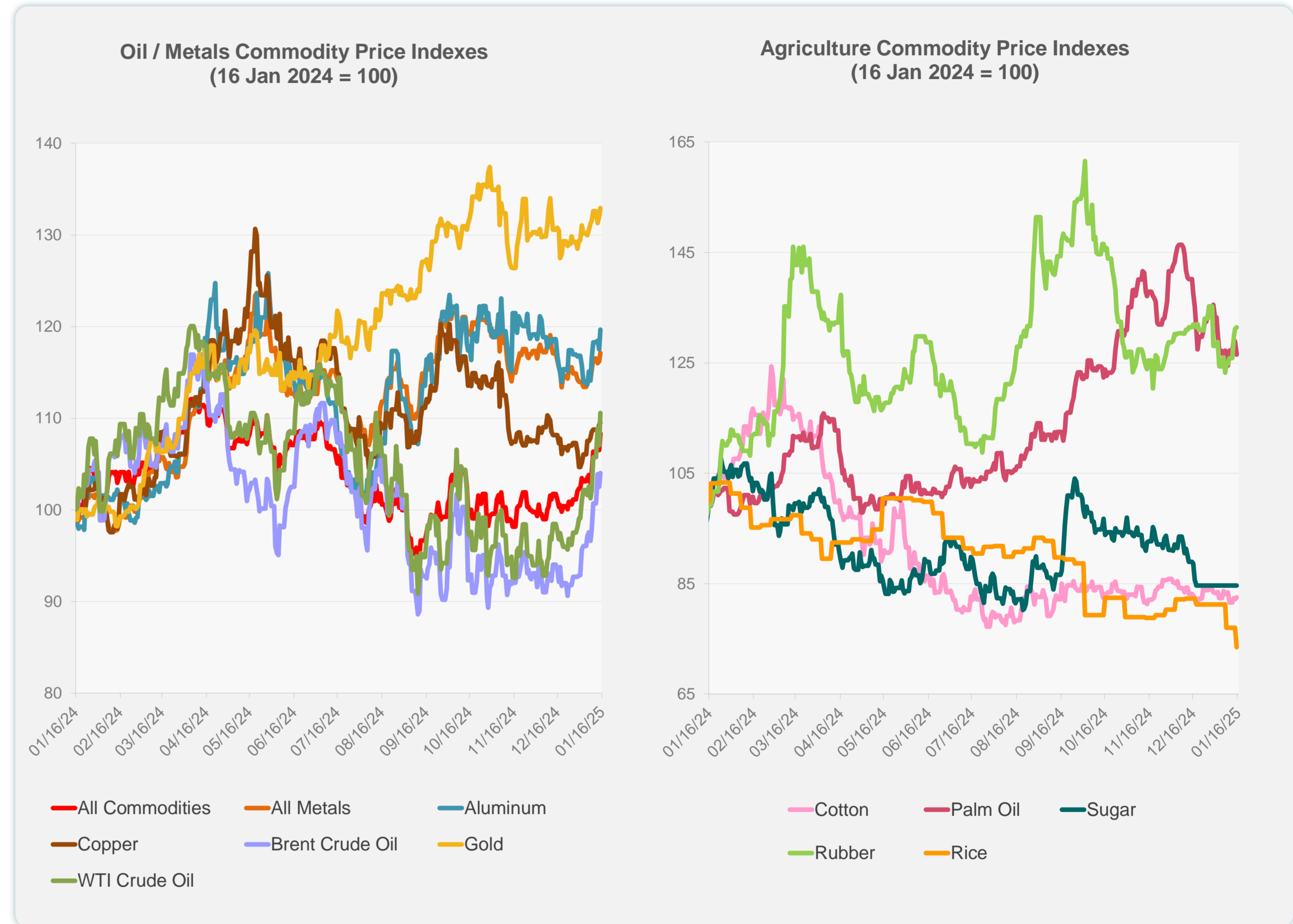
Daily Market Watch
COMMODITY PRICES

16 January 2025, 9:00 AM Manila

	Unit	Latest Closing	% change from Previous Day	% change from 01-Jan-25
S&P All Commodities	US\$	581.77	1.72	5.84
S&P All Metals	US\$	315.89	0.76	2.77
Aluminum	US\$/metric ton	2,588.01	1.83	2.42
Copper	US\$/metric ton	9,053.38	0.22	4.63
Cotton	US cents/lb	65.27	0.42	-0.96
Brent Crude Oil	US\$/barrel	83.01	1.48	12.02
WTI Crude Oil	US\$/barrel	80.04	3.28	11.60
Gold	US\$/troy oz	2,696.32	0.70	2.74
Palm Oil	US\$/metric tonne	1,044.72	-1.85	-5.04
Rice ¹	US\$/metric ton	486.00	-4.52	-9.50
Rubber ²	US\$/kg	243.00	0.21	2.62
Sugar	US cents/lb	18.59	0.00	0.00

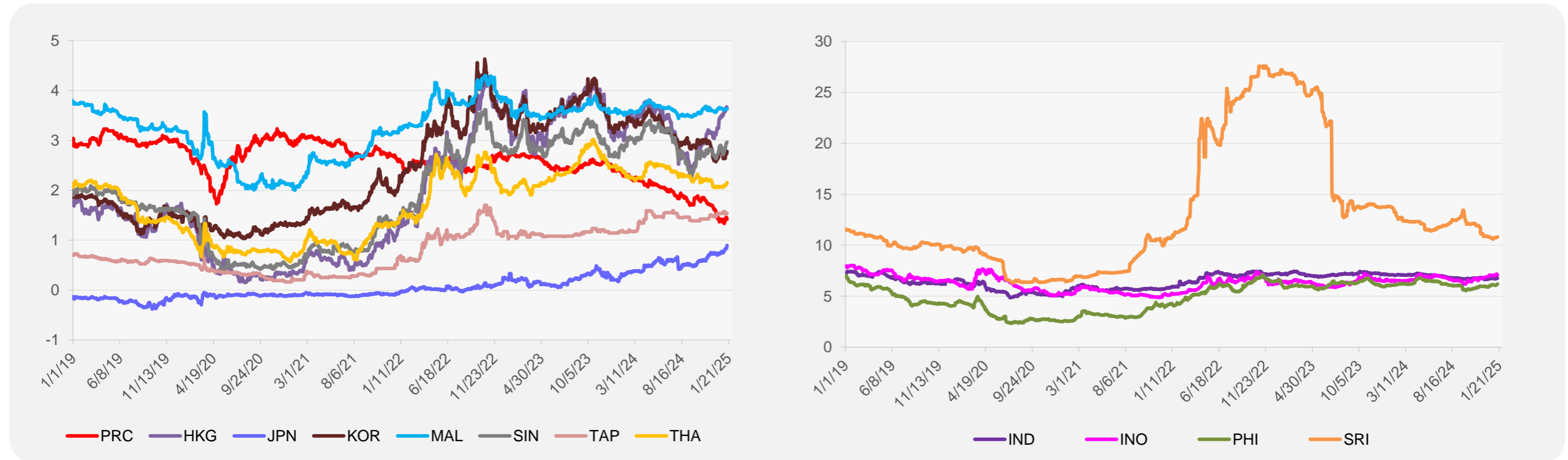
¹ Latest closing price from 8 January 2025.

² Singapore Exchange, Ribbed Smoked Sheet Rubber.

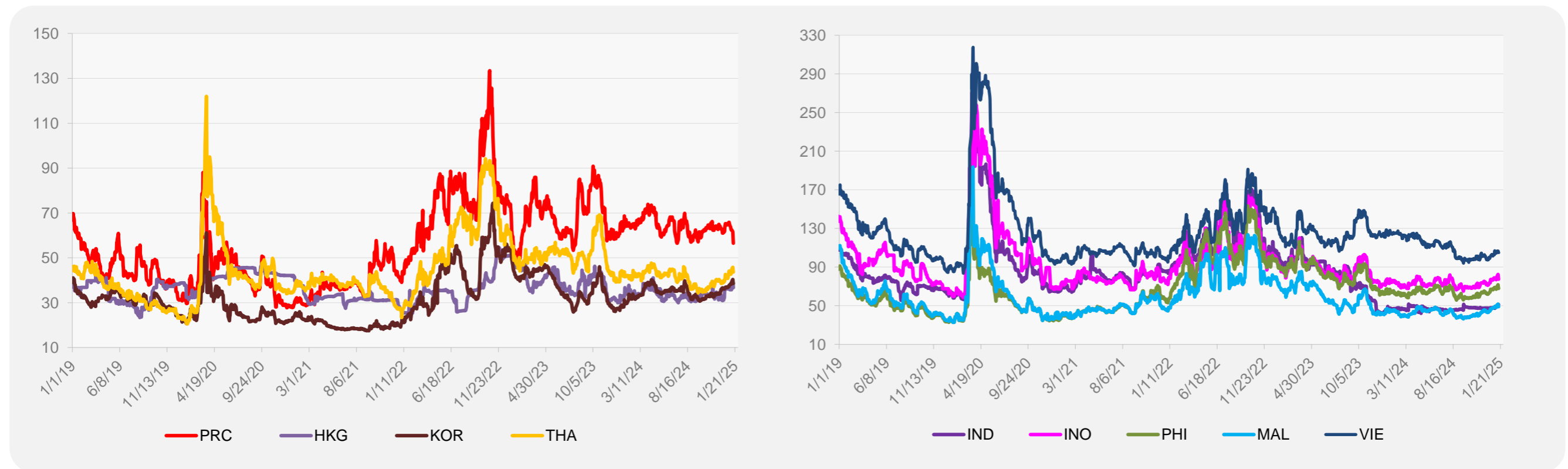


Source: ADB calculations using data from Bloomberg.

5-YEAR LOCAL CURRENCY GOVERNMENT BOND YIELDS (%)



5-YEAR CREDIT DEFAULT SWAP¹



¹ In USD and based on sovereign bonds.
Source: ADB calculations using data from Bloomberg.